

## X300 Laser Scanner

3D Laser Scanning  
that works, anywhere



# X300 *Simple, tough, accurate*

*The right tool for your  
daily work*

STONEX X300 is a 3D Scanner designed to deliver effective results every day, on any project.

It's ease of use, reliability, flexibility and reasonable price make it your perfect work companion.



## **RUGGED DESIGN**

The fully sealed case protects your inversion making it possible to get the job done where others fail, regardless of dust, humidity, heat or bumps.



## **EASE OF USE**

Push one button and control X300 with your smartphone or tablet. Laser scanning has never been easier.



## **RETURN ON INVERSION**

X300 balances the performance you really need in a wide range of applications with a reasonable price.



## **EXPANDABLE**

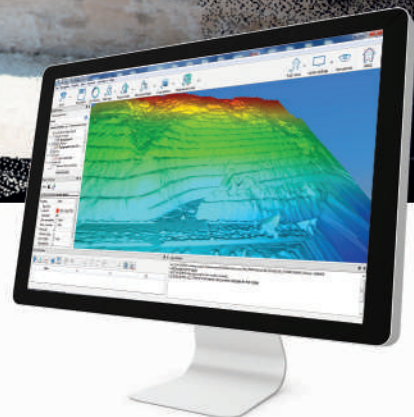
A complete set of accessories provide flexibility in any environment.



## **MADE IN ITALY**

A clean effective design for your daily work.





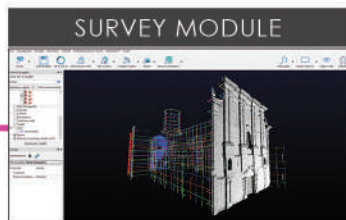
# STONEX RECONSTRUCTOR

## Powerful and usable 3D Software

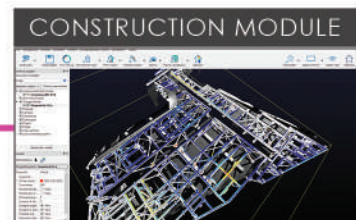
STONEX RECONSTRUCTOR SOFTWARE will guide you through a complete and clear workflow with expandable modules suited to your needs.



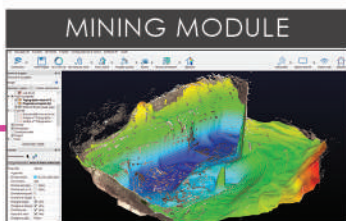
**LINE UP PRO MODULE**  
Powerful Cloud Registration Tool, known for its efficient algorithm that makes alignment easier.



**SURVEY MODULE**  
All the Cloud management tools in one application.



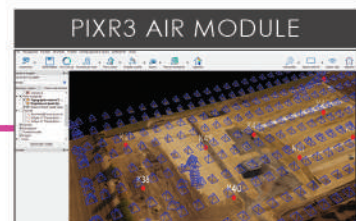
**CONSTRUCTION MODULE**  
Advanced features for BIM, Architecture and Construction.



**MINING MODULE**  
All you need for quarries, cut&fill volumes, excavations, DTM.



**COLOR & MAPPING MODULE**  
Use your own high resolution camera to color the scans.



**PIXR3 AIR MODULE**  
Process data collected with UAV and integrate them with X300

## Open File Manager

If you are using CAD, crime scene, car crash analysis or other 3rd party software, you can now load the point cloud data collected with X300 directly into your workflow.

# TECHNICAL FEATURES

## PERFORMANCE

Range	1.6 – 300 m, 100% reflectivity (on white)
Field of view	Horizontal 360° (full panoramic) Vertical 90° (-25° to +65°)
Scan rate	Up to 40000 points/sec
Laser Beam Divergence	0.37 mrad
Grid spacing	39 mm x 39 mm @ 100 m
Angular resolution	1.35' (H) x 1.35' (V) (at max resolution)
Range accuracy	< 6 mm @ 50 m - (1 sigma) < 40 mm @ 300 m

## SYSTEM

Scanning optics	Vertically rotating mirror, horizontally rotating base
Laser Class	Class 1M (IEC 60825-1)
Laser wavelength	905 nm (invisible)
Dual-axis compensator	Accuracy 0.08°, Range +/- 20°
Integrated cameras	5 + 5 megapixels
Resolution	120MB over 360°
Data storage	Integrated 32Gb memory
Data transfer	Wi-Fi, USB device, Ethernet
Scanner control	Dedicated Wi-Fi web interface for smartphone/tablet (Android, iOS and Windows Mobile)

## Scanner

Size (D x W x H)	215 mm x 170 mm x 430 mm
Weight	6.15 kg/12.35 lbs (without battery)

## Battery

Size (D x W x H)	42 mm x 165 mm x 120 mm
Weight	0.85 kg / 1.76 lbs

## AC Power Supply

Size (D x W x H)	147 mm x 63 mm x 38 mm
Weight	200 g / 0.441 lbs

## ELECTRICAL

Power supply	12 V (battery or external power unit)
Power consumption	40 W (on average)
Battery type	Li-Poly
Operation	> 3 h

## ENVIRONMENTAL

Operating temp.	-10°C to +50°C / 14°F to 122°F
Storage temp.	-25°C to +80°C / -13°F to 176°F
Humidity	Non-condensing
Protection class	IP65

Illustrations, descriptions and technical specifications are not binding and may change



# ACCESSORIES

## MONITORING KIT

External Power Supply with Ethernet cable control to operate remotely the scanner in monitoring projects.



## GPS KIT

Kit designed to connect the GNSS receiver to the X300 Laser Scanner. The easiest way to georeference your 3D data.

## X300 FRAMEWORK

Expand the field of view and scan ceilings and tunnels.



## CAMERA KIT

Install a DSLR camera to apply high resolution images to your scans

STONEX AUTHORIZED DEALER

**STONEX®**  
Part of UniStrong

Via Cimabue 39 - 20851 Lissone (MB) Italy  
Phone +39 039 2783008 | Fax +39 039 2789576  
www.stonex.it | info@stonexpositioning.com